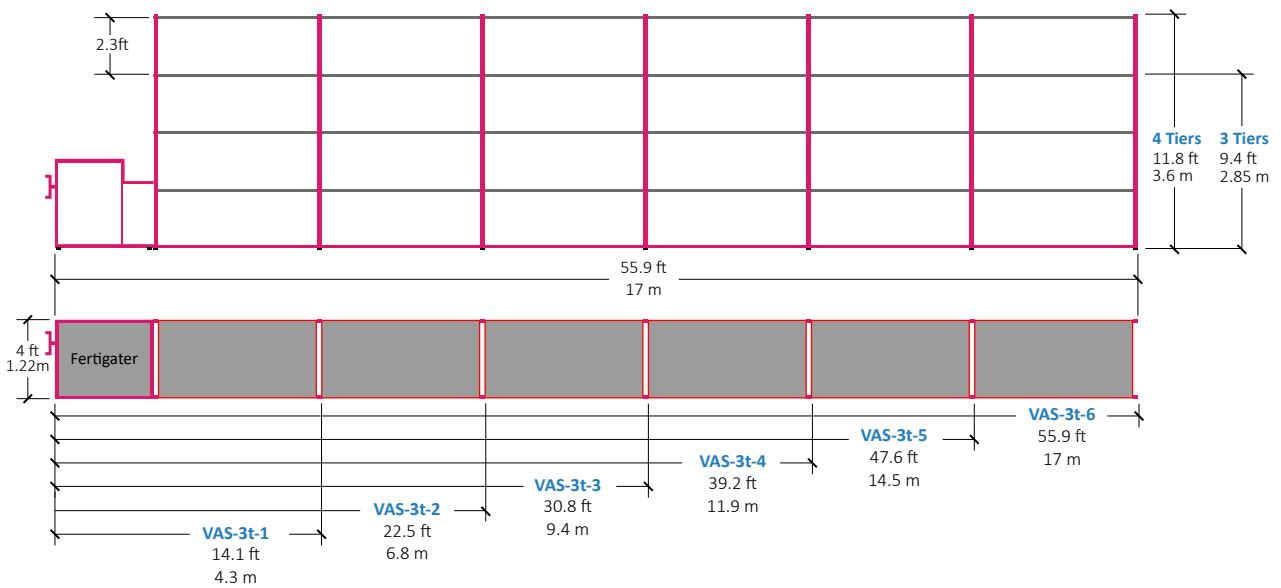


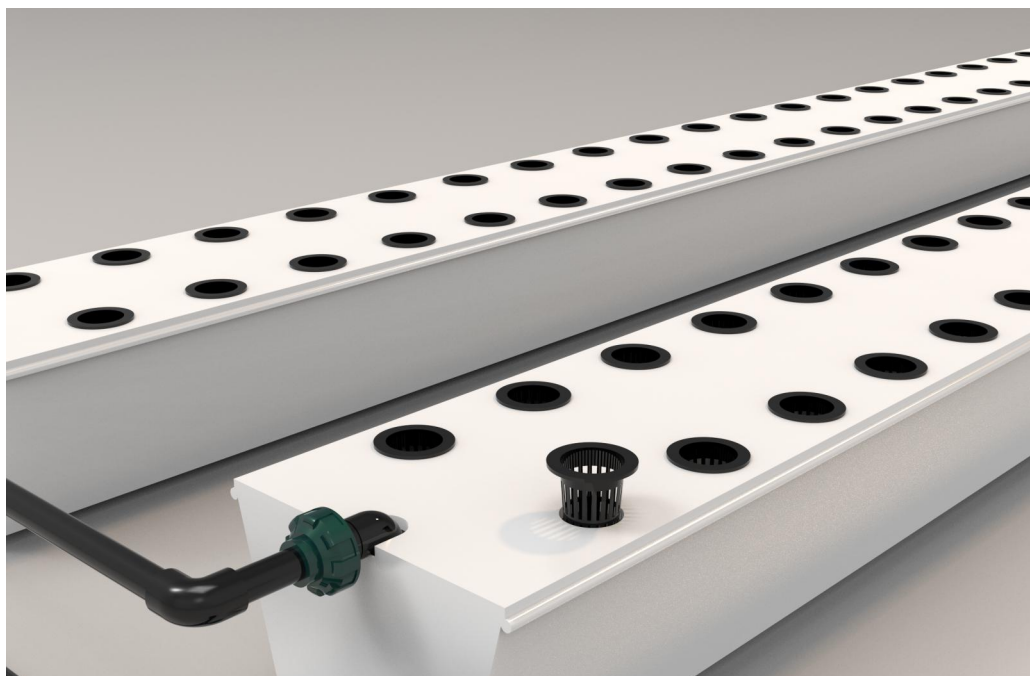


### Measurements



### Applications

**Optimal For** Strawberries, etc



## Specifications

○ Optional ● Standard	VAS-3t-2	VAS-3t-3	VAS-3t-4	VAS-3t-5	VAS-3t-6	VAS-4t-1	VAS-4t-2	VAS-4t-3	VAS-4t-4	VAS-4t-5	VAS-4t-6
<b>Basic Specifications</b>											
Power in Max (KW)	5.7	6.9	8.4	9.6	10.5	5.1	6.4	8.5	9.8	11.4	12.7
Irrigation Pattern	Hybrid Of Aeroponic & Hydroponic										
Control Unit	7" touch screen with RS 485 output										
Canopy Area (sq-ft)	192	288	384	480	576	128	256	384	512	640	768
(sq-m)	17.8	26.7	35.6	44.5	53.4	11.8	23.7	35.6	47.5	59.4	71.2
Space Needed (sq-ft)	90	123.2	156.8	190.4	223.6	56.4	90	123.2	156.8	190.4	223.6
(sq-m)	8.3	11.4	14.5	17.7	20.7	5.2	8.3	11.4	14.5	17.7	20.7
Size - L/W/H (ft)	22.5 x 4 x 9.4	30.8 x 4 x 9.4	39.2 x 4 x 9.4	47.6 x 4 x 9.4	55.9 x 4 x 9.4	14.1 x 4 x 11.8	22.5 x 4 x 11.8	30.8 x 4 x 11.8	39.2 x 4 x 11.8	47.6 x 4 x 11.8	55.9 x 4 x 11.8
(m)	6.8 x 1.2 x 2.85	9.4 x 1.2 x 2.85	11.9 x 1.2 x 2.85	14.5 x 1.2 x 2.85	17 x 1.2 x 2.85	4.3 x 1.2 x 3.6	6.8 x 1.2 x 3.6	9.4 x 1.2 x 3.6	11.9 x 1.2 x 3.6	14.5 x 1.2 x 3.6	17 x 1.2 x 3.6
<b>Irrigation System</b>											
Pump	820W / 230V / 4.1A	820W / 230V / 4.1A	1360W / 230V / 6A	1360W / 230V / 6A	1360W / 230V / 6A	820W / 230V / 4.1A	820W / 230V / 4.1A	1360W / 230V / 6A	1360W / 230V / 6A	1360W / 230V / 6A	1360W / 230V / 6A
Water Chiller	1.5 HP	1.5 HP	1.5 HP	1.5 HP	1.5 HP	1.5 HP	1.5 HP	1.5 HP	1.5 HP	1.5 HP	1.5 HP
UV Sterilizer	●	●	●	●	●	●	●	●	●	●	●
Filters	●	●	●	●	●	●	●	●	●	●	●
Aerator	●	●	●	●	●	●	●	●	●	●	●
Dosing System	○	○	○	○	○	○	○	○	○	○	○
Ductwork	PVC & PE	PVC & PE	PVC & PE	PVC & PE	PVC & PE	PVC & PE	PVC & PE	PVC & PE	PVC & PE	PVC & PE	PVC & PE
Planting Pot(Pcs)	12	18	24	30	36	8	16	24	32	40	48
QTY of plant holes(Pcs)	288	432	576	720	864	192	384	576	768	960	1152
<b>Lighting System</b>											
Total Power(W)	1920	2880	3840	4800	5760	1280	2560	3840	5120	6400	7680
Model of LED Grow Lights	BS320	BS320	BS320	BS320	VB320	BS320	BS320	BS320	BS320	BS320	BS320
QTY of Lights (Pcs)	6	9	12	15	18	4	8	12	16	20	24
Dimmer	Stepless Adjusted										
<b>Power Repeater &amp; Ventilation Box</b>											
Power(W)	240	480	480	720	720	320	320	640	640	960	960
QTY of Ventilation(Pcs)	12	24	24	36	36	16	16	32	32	48	48
<b>Mobile Rack System</b>											
Way of Moving	Mechanic Assist										
Bearing	Dual-Bearing										
Tiers	3	3	3	3	3	4	4	4	4	4	4
Set	2	3	4	5	6	1	2	3	4	5	6
Total QTY of Tray	6	9	12	15	18	4	8	12	16	20	24
Bearing Force	800Kgs/Tray										